

NIKSAR CUP 2009

Bulletin 1/2

Organizer

The event will organize in June 26-28, 2009 by the Turkish Orienteering Federation and by the Niksar Government in Niksar, Tokat, Türkiye

Addresses

Türkiye Orienteering Fed. Ulus Ishani A Blok Kat 4 No: 406 Ulus Ankara TURKIYE

Contact Person

İlker YILMAZ

Phone: +90 5322050395 (mobile)

Fax: +90 312 3246188

e-Mail: info@niksarcup.org

IOF Advisor

Veysel Güler, veha772000@yahoo.com, +905336583594

Event Center

Niksar Municipality, info center

Event Program

Date	Time	Event	Place
June 26, 2009	10:00-19:00	City orienteering	Niksar
June 27, 2009	10:00-19:00	Middle	Çamiçi
June 28, 2009	10:00-19:00	Long *	Çamiçi (WRE)

Classes

(W stands for Women/Female and M stands for Men/Male and E stands for Elite),

* Stage 3 will be **WRE**.

Class	Course Length km	Class	Course Length km	Year Born
W10	2,0 - 3,5	M10	2,5 - 4,5	1999 -
W12	3,0 - 4,0	M12	3,0 - 4,0	1998 - 1997
W14	4,0 - 5,5	M14	4,5 - 5,5	1996 - 1995
W16	4,5 - 5,5	M16	5,0 - 6,0	1994 - 1993
W18	4,6 - 6,5	M18	5,2 - 7,5	1992 - 1991
W20	4,8 - 6,5	M20	5,3 - 8,5	1990 - 1989

W21E	6,0 - 9,0	M21E	8,0 - 11,0	
W35	5,3 - 7,5	M35	5,3 - 7,5	- 1974
W open	4,5 - 6,0	M open	4,5 - 6,5	

* The organizer reserves the right to change the course lengths and numbers of control points.

Other classes will be formed upon registration of at least 10 participants. IOF rules will apply when placing participants in classes, should there not be a sufficient number of participants in the class they desire.

Maps

Stage 1 – June 26, 2009 CITY orienteering

Scale: 1/ 5.000

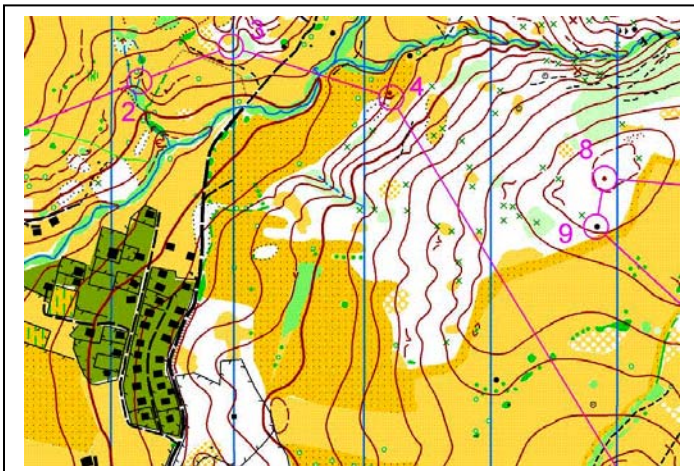
Contour Interval: 2.5 m



Stage 2 – June 27, 2009 Middle Distance

Scale: 1/ 10.000

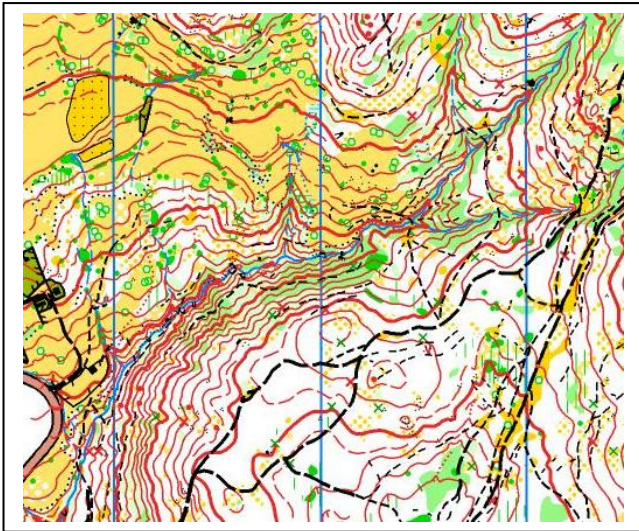
Contour Interval: 5 m



Stage 3 – June 28, 2009 Long Distance-WRE*

Scale: 1 / 10.000

Contour Interval: 5 m



Results

Overall results will be announced according to the IOF rules.

Electronic Punching SI cards

The SI electronic punching system will be used in all events. SI cards may be supplied to participants who have no SI card of their own.

Accommodation:

Staying in tents will be available without any charge. Various options will be available close to the venues at about 15-30 Euros of charge. Please follow our announcements under the <http://www.niksarcup.org/index.html>

Transportation:

Transportation from the accommodation sites announced on our website to the competition areas will be available free of charge. <http://www.niksarcup.org/index.html>

Fees and transfer of payment:

Class	Entries (Up to 12th June, 2009)	Late Entries (Up to 19th, 2009)
Children Classes 10-14 (M/W)	Free of charge	Free of charge
16+ (M/W)	€ 45 for three days	€ 60

The fee is 45 Euros for three days for registration up to **12th June, 2009**. The fee is for the three days, and includes transportation to and from competition sites. This fee does not include meals and entrance to the museums. Bank accounts will be available for transfer, but due to high bank transfer rates, participants may pay during registration at the event center.

Late registrations will be accepted up to **19th June, 2009**. After this date, the organizing committee cannot guarantee participation in the desired category.

*World Ranking Event

NIKSAR CUP 2009

Application Form

Participant Information

Name:

Surname:

Year of Birth:

Country:

Club Name:

e-mail address:

Class (M/W, age):

WRE ID:

SI Card No (if present):

Stages to participate (1, 2, 3, 1-2, 1-3, 2-3, all):